

Teeth Buckle Solutions Guide

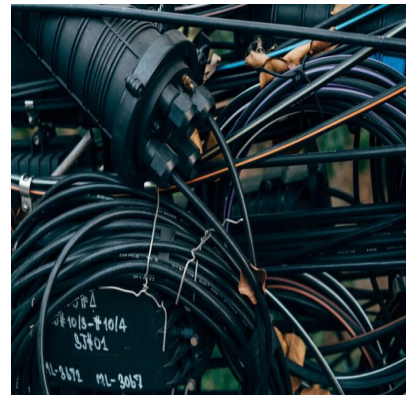
Perfect Solutions for Your Needs

APPLICATIONS

Building Signs



Telecommunications



Construction Industry



www.enzemfg.com

Banding All Over The World

Enze is an innovative company that provides unparalleled clamping solutions



Enze Mfg Co. Ltd. provides innovative, reliable CNC machining, sheet metal fabrication, rapid prototyping, forging, mold making, and surface finishing services with a human-centric approach. We aim to become a leading expert and assist customers in achieving success while contributing to a more sustainable future.

Our Market:

Certificates

As a demonstration of our ongoing commitment to excellence, quality, and environmental management, Enze is proud to display the following certificates of compliance with the prestigious International Standards:

- ISO 9001

- ISO 14001

- ISO/TS16949

Since TS certification, Enze continues to seek new ways to manufacture products through equipment upgrades, employee training, and quality assurance to deliver the best products to our clients.

Market: Globe

Curated Products: 2000+

Customers: 500+

Exporting Countries: 80+

Specification Sheet for Buckle



Model	Material	Width		Thickness		Average Breaking Strength (lbs)	Package	Weight		Tools Applied
		inch	mm	inch	mm			lbs	kg	
316 Stainless Steel Band Coated										
EZ4339	316 SS	3/8	9.6	0.048**	1.22**	505	82.5/Roll	2.6	1.2	T07569 T08569
EZ4349	316 SS	1/2	12.7	0.048**	1.22**	670	82.5/Roll	3.5	1.6	
EZ4359	316 SS	5/8	15.8	0.048**	1.22**	840	82.5/Roll	4.4	2.0	
EZ4369	316 SS	3/4	19.1	0.048**	1.22**	1000	82.5/Roll	5.3	2.4	
**Material thickness includes PPA 571 finish. It's important to note that the base material thickness measures 0.015 inches.										
316 Stainless Steel Band Uncoated										
EZ40299	316 SS	1/4	6.4	0.020	0.51	400	100'/Roll	2.0	0.9	T00169 T00369 T07569* T08569* T40099 T02069*
EZ40399	316 SS	3/8	9.6	0.025	0.64	750	100'/Roll	3.5	1.6	
EZ40499	316 SS	1/2	12.7	0.030	0.76	1200	100'/Roll	4.9	2.2	
EZ404B9	316 SS	1/2	12.7	0.030	0.76	1200	Blue Tote 100'/Roll	5.6	2.6	
EZ40599	316 SS	5/8	15.8	0.030	0.76	1500	100'/Roll	6.2	2.8	
EZ405G9	316 SS	5/8	15.8	0.030	0.76	1500	Green Tote 100'/Roll	6.9	3.1	
EZ40699	316 SS	3/4	19.1	0.030	0.76	1800	100'/Roll	7.5	3.4	
EZ406R9	316 SS	3/4	19.1	0.030	0.76	1800	Red Tote 100'/Roll	8.2	3.7	
Use the T02069 for products up to 3/8" wide and C07569 / C08569 tools for materials up to 0.025" (0.63mm)										

316 Stainless Steel Buckle

316 Stainless Steel Clip

Model	Material	Width		Package	Weight	
		inch	mm		lbs	kg
316 Stainless Steel Buckle						
B45299**	316 SS	1/4	6.4	100/Box	0.3	0.1
B45399	316 SS	3/8	9.6	100/Box	0.8	0.4
B45499	316 SS	1/2	12.7	100/Box	2.1	1.0
B45599	316 SS	5/8	15.8	100/Box	2.4	1.1
B45699	316 SS	3/4	19.1	100/Box	3.7	1.7
** Clip Style						

Model	Material	Width		Package Quantity	Weight	
		inch	mm		lbs	kg
316 Stainless Steel Clip						
C4529	316 SS	1/4	6.4	100/Box	0.3	0.1
C4539	316 SS	3/8	9.6	100/Box	0.6	0.3
C4549	316 SS	1/2	12.7	100/Box	1.0	0.4
C4559	316 SS	5/8	15.8	100/Box	1.1	0.5
C4569	316 SS	3/4	19.1	100/Box	1.3	0.6